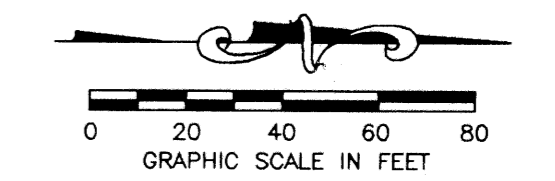


ADDISON RESERVE PARCEL FOURTEEN

PART OF GLENEAGLES/POLO CLUB WEST P.U.D.
BEING A REPLAT OF TRACT 14
"ADDISON RESERVE PLAT FOUR"
(P.B. 79, PGS. 76-81)
SITUATE IN SECTION 28, TOWNSHIP 46 SOUTH, RANGE 42 EAST
PALM BEACH COUNTY, FLORIDA
AUGUST, 1998 SHEET 3 OF 3

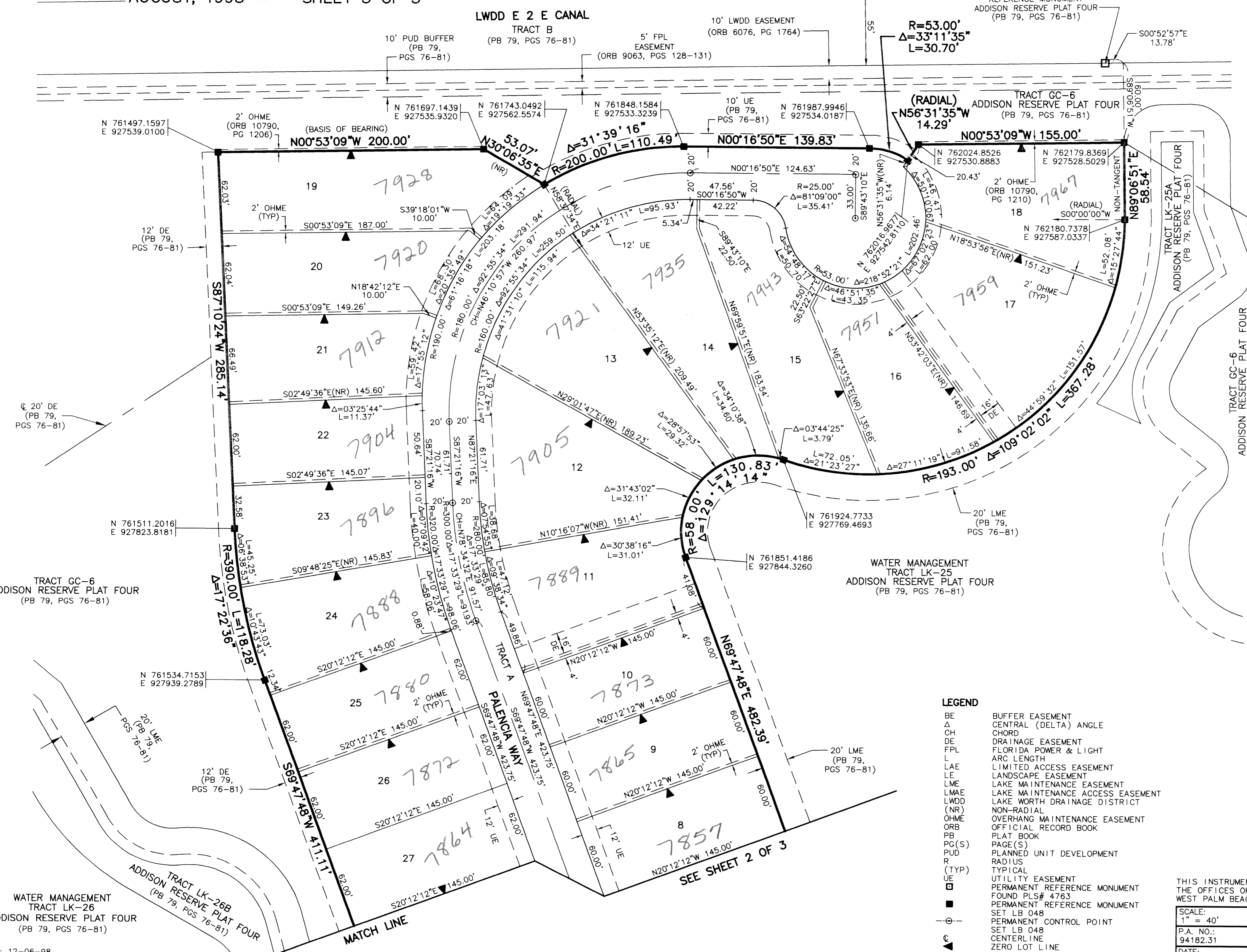
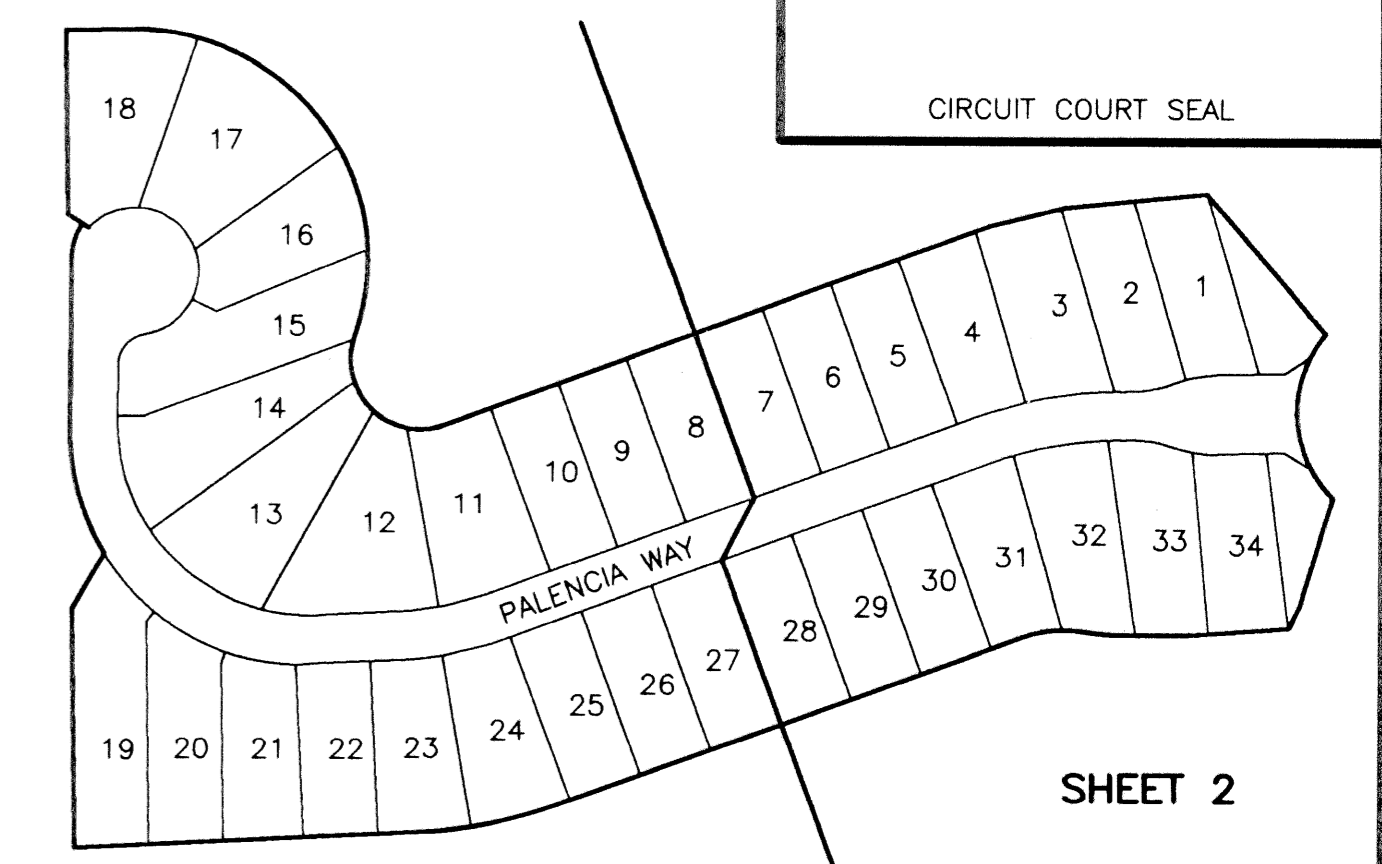
0230-032

56



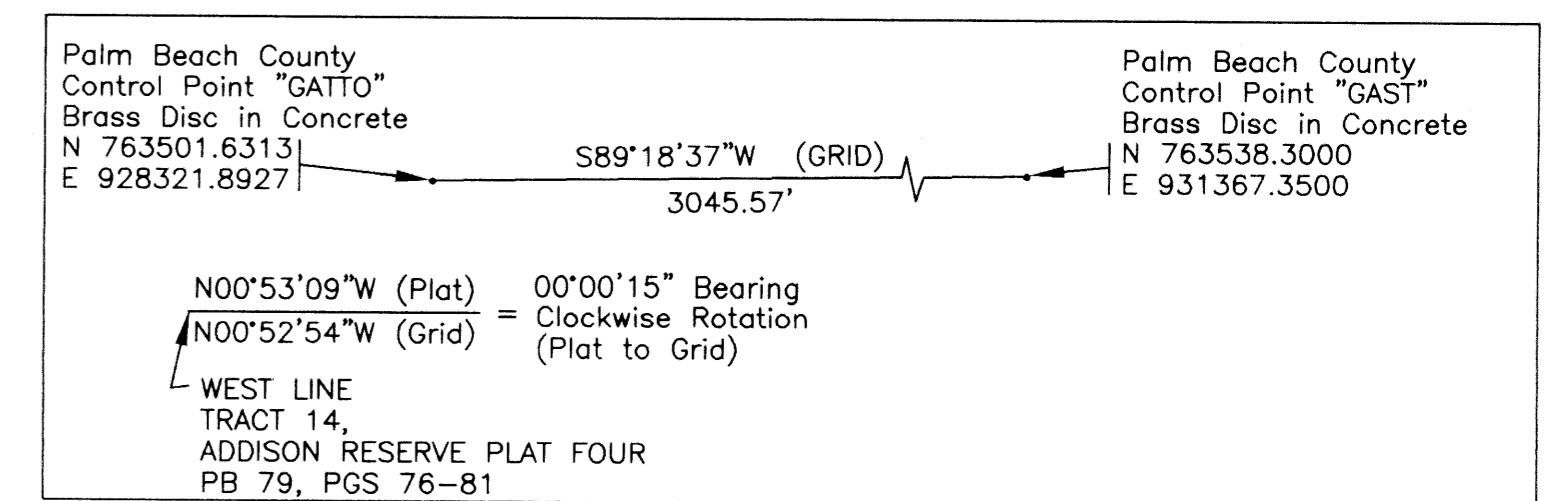
STATE OF FLORIDA
COUNTY OF PALM BEACH
THIS PLAT WAS FILED FOR
RECORD _____ DAY OF _____
AD, 1998 AND DULY RECORDED
IN PLAT BOOK _____ ON PAGES
_____ AND _____
DOROTHY H. WILKEN, CLERK
BY: _____, D.C.

CIRCUIT COURT SEAL



NOTES:

1. THE COORDINATES SHOWN HEREON ARE STATE PLANE GRID COORDINATES ACCORDING TO THE TRANSVERSE MERCATOR PROJECTION OF THE FLORIDA EAST ZONE, N.A.D. 83, PER THE 1990 ADJUSTMENT.
2. THE LINEAR DIMENSIONS SHOWN HEREON ARE GROUND DISTANCES IN U.S. FEET AND DECIMAL PARTS THEREOF.
3. THE GROUND DISTANCE TO GRID DISTANCE SCALE FACTOR IS 1.0000338 (GROUND DISTANCE X SCALE FACTOR = GRID DISTANCE).
4. ALL LINES WHICH INTERSECT CURVES ARE RADIAL TO THOSE CURVES UNLESS OTHERWISE NOTED.



LEGEND

- BE BUFFER EASEMENT
- Δ CENTRAL (DELTA) ANGLE
- CH CHORD
- DE DRAINAGE EASEMENT
- FPL FLORIDA POWER & LIGHT
- L ARC LENGTH
- LAE LIMITED ACCESS EASEMENT
- LE LANDSCAPE EASEMENT
- LME LAKE MAINTENANCE EASEMENT
- LMAE LAKE MAINTENANCE ACCESS EASEMENT
- LWDD LAKE WORTH DRAINAGE DISTRICT
- (NR) NON-RADIAL
- OHME OVERHANG MAINTENANCE EASEMENT
- ORB OFFICIAL RECORD BOOK
- PB PLAT BOOK
- PG(S) PAGE(S)
- PUD PLANNED UNIT DEVELOPMENT
- R RADIAL
- (TYP) TYPICAL
- UE UTILITY EASEMENT
- UR PERMANENT REFERENCE MONUMENT
- UR FOUND PLS# 4763
- UR PERMANENT REFERENCE MONUMENT
- UR SET LB 048
- UR PERMANENT CONTROL POINT
- UR SET LB 048
- UR CENTERLINE
- UR ZERO LOT LINE

THIS INSTRUMENT WAS PREPARED BY MARY HANNA CLODFELTER, P.S.M. IN THE OFFICES OF MOCK, ROOS & ASSOCIATES, INC., 5720 CORPORATE WAY, WEST PALM BEACH, FLORIDA 33407.

SCALE:
1" = 40'
P.A. NO.:
94182.31
DATE:
AUGUST, 1998
DRAWING NO.
46-42-28-174

MOCK • ROOS
ENGINEERS • SURVEYORS • PLANNERS

5720 Corporate Way, West Palm Beach, Florida 33407
(561) 683-3113, fax 478-7248

**ADDISON RESERVE
PARCEL FOURTEEN**
PART OF GLENEAGLES/POLO CLUB WEST P.U.D.
BEING A REPLAT OF TRACT 14
"ADDISON RESERVE PLAT FOUR"
(P.B. 79, PGS. 76-81)
SITUATE IN SECTION 28, TOWNSHIP 46 SOUTH, RANGE 42 EAST
PALM BEACH COUNTY, FLORIDA

SHEET 3 OF 3

ADDISON RESERVE
Parcel 14
BOOK 84
FLOOD MAP # 215 A
PAGE 56
QUAD # 52
ZONING R1D1SE
SE 80-215
TAL 478
PUB NAME PalcoC14b west

ADDIRP48.dwg 12-6-98 4:53:48 pm EST
REV.: 12-06-98
CAD FILE:
TWKCADDI\ADDIRP48